



Conceptualising Resilience: A Plan

The 'Concept' Team

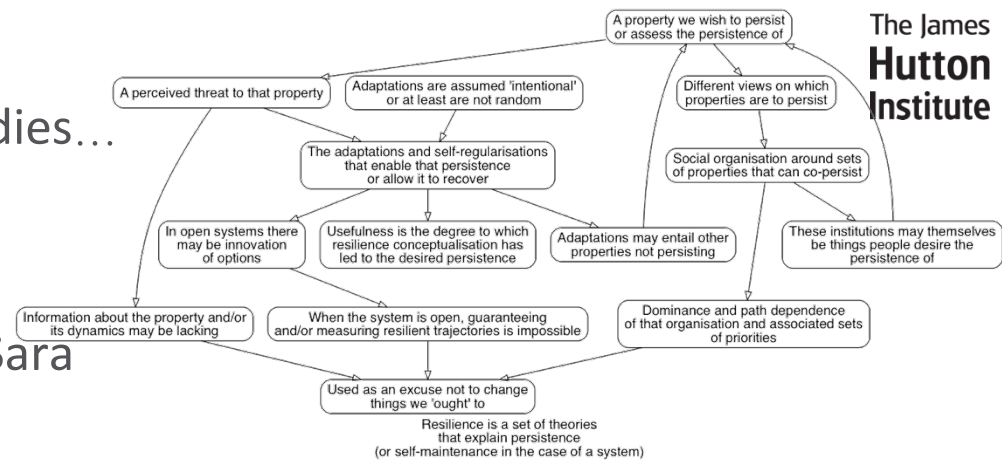
Vincent Awotwe-Pratt, Mike Bithell, Frank Dignum,
Bruce Edmonds, Samoneh Heidari, Sara Mehryar,
Gary Polhill, George van Voorn, Themis Xanthopoulou



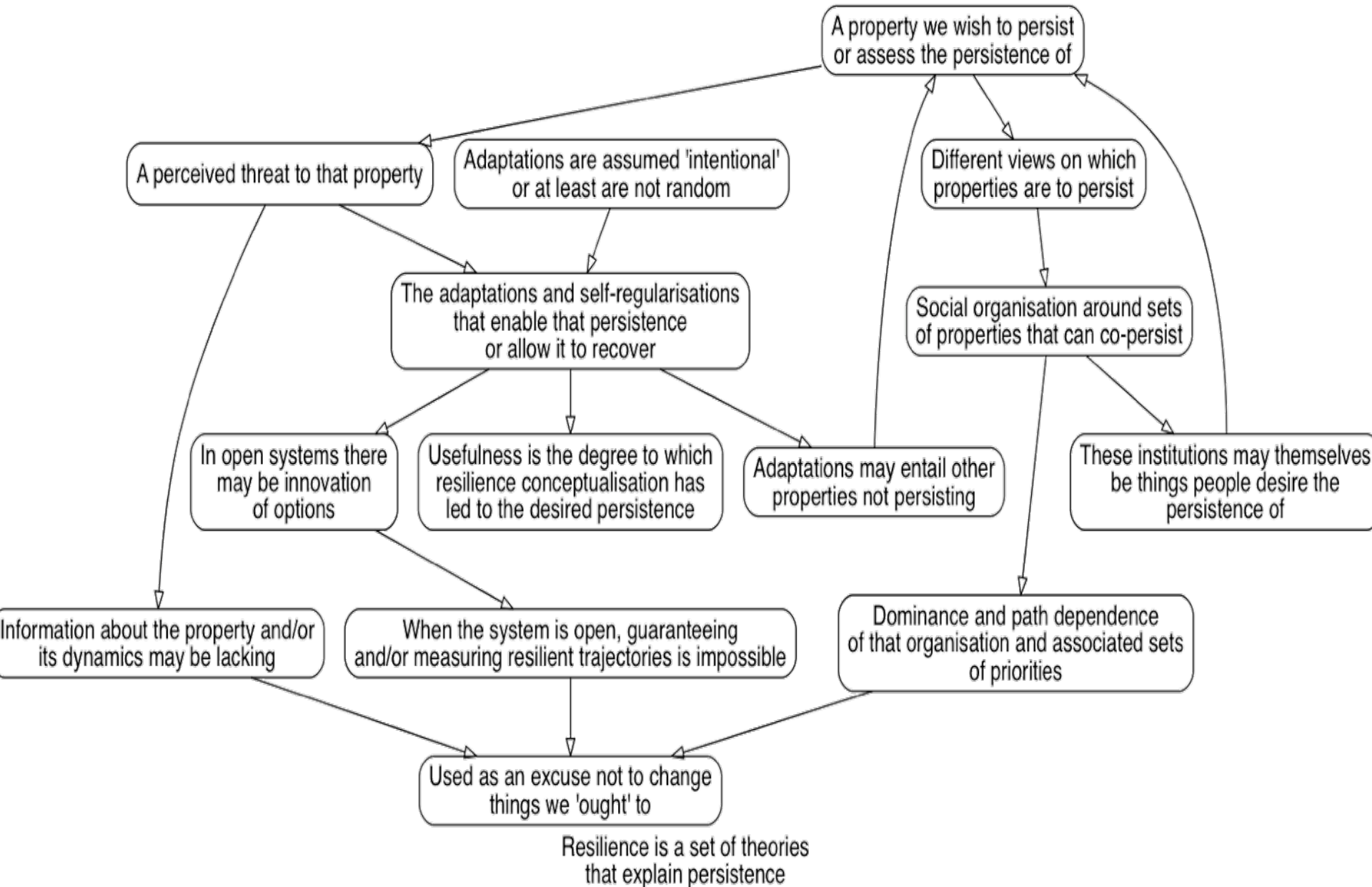
The James
Hutton
Institute

The plan

- Document the conceptualisation
- See how well it maps to case studies...
 - Vincent, Themis, Sara
- ... and models
 - Gary, Bruce, Samoneh, Sara
 - Didactic model?
- Define some runs with FEARLUS-SPOMM
 - Varying environmental 'challenge'
 - Varying cognitive powers of agents ('adaptive capacity')
- Define analogous runs with Bruce, Samoneh and Sara's models
- Run them and collect the results
- George (& WUR colleagues?) analyse the results
- Write a paper
 - Maja has offered to take a look and/or participate to check we are not looking naïve about resilience



The concept



Paper: “Conceptualising the social complexity of resilience”?



The James
Hutton
Institute

- Target journal: Ecology & Society?
- Introduction
 - Review of conceptualisations of resilience (George)
 - Why we need another one
 - Why we use models
 - To make sure our conceptualisations are ‘sound’
- Conceptualisation
 - Our conceptualisation
 - Applications of it (case studies, models)
 - Do this independently several times for the same thing to see if it is applied consistently? – Mareen
- Models
 - Brief descriptions (will need to refer to other work and/or appendices)
- Results
- Discussion & Conclusion

This will not be the title!

